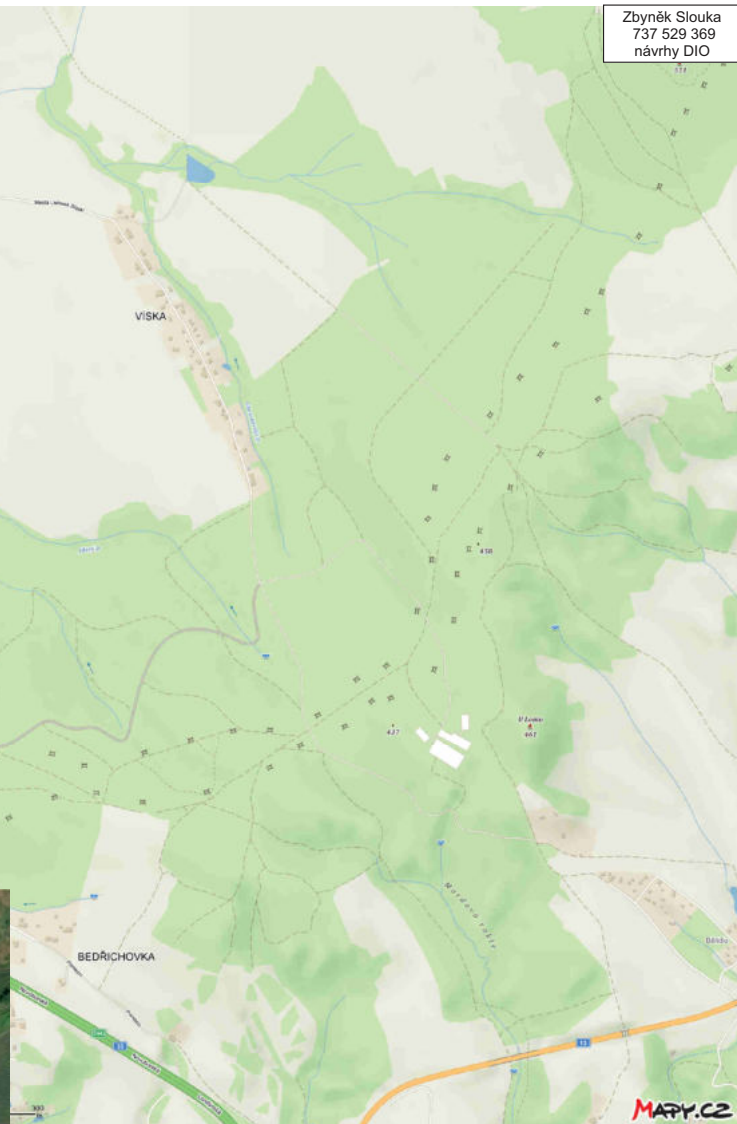
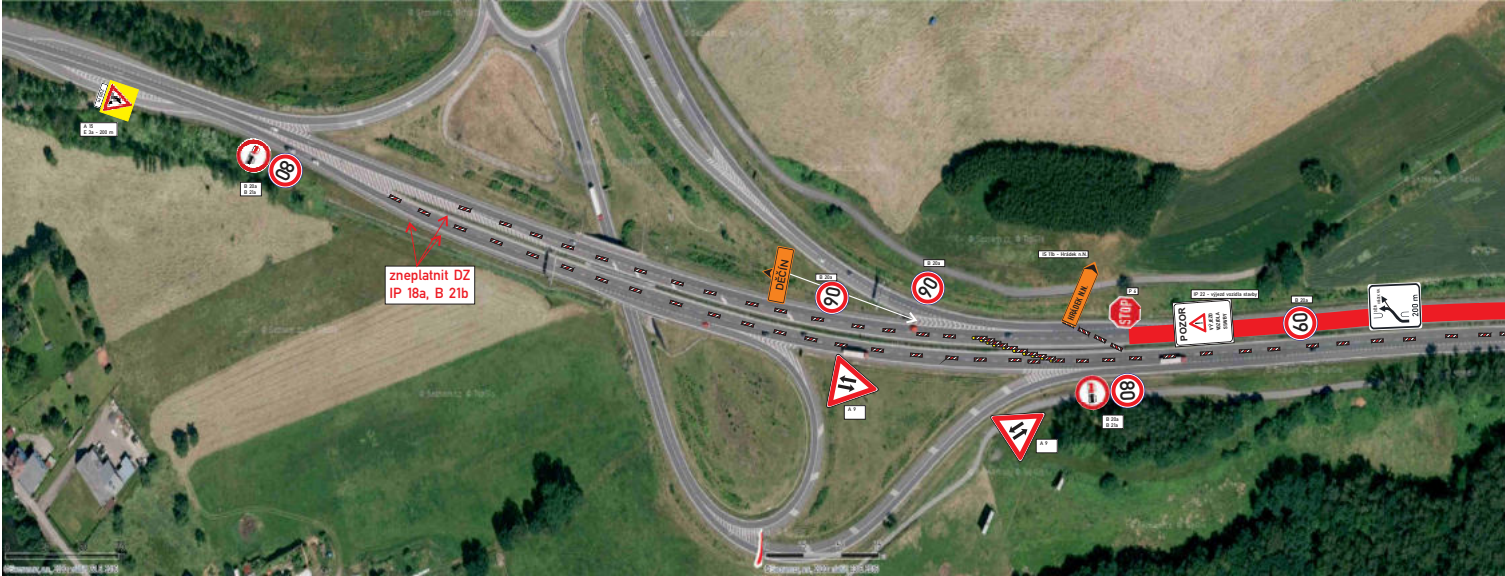
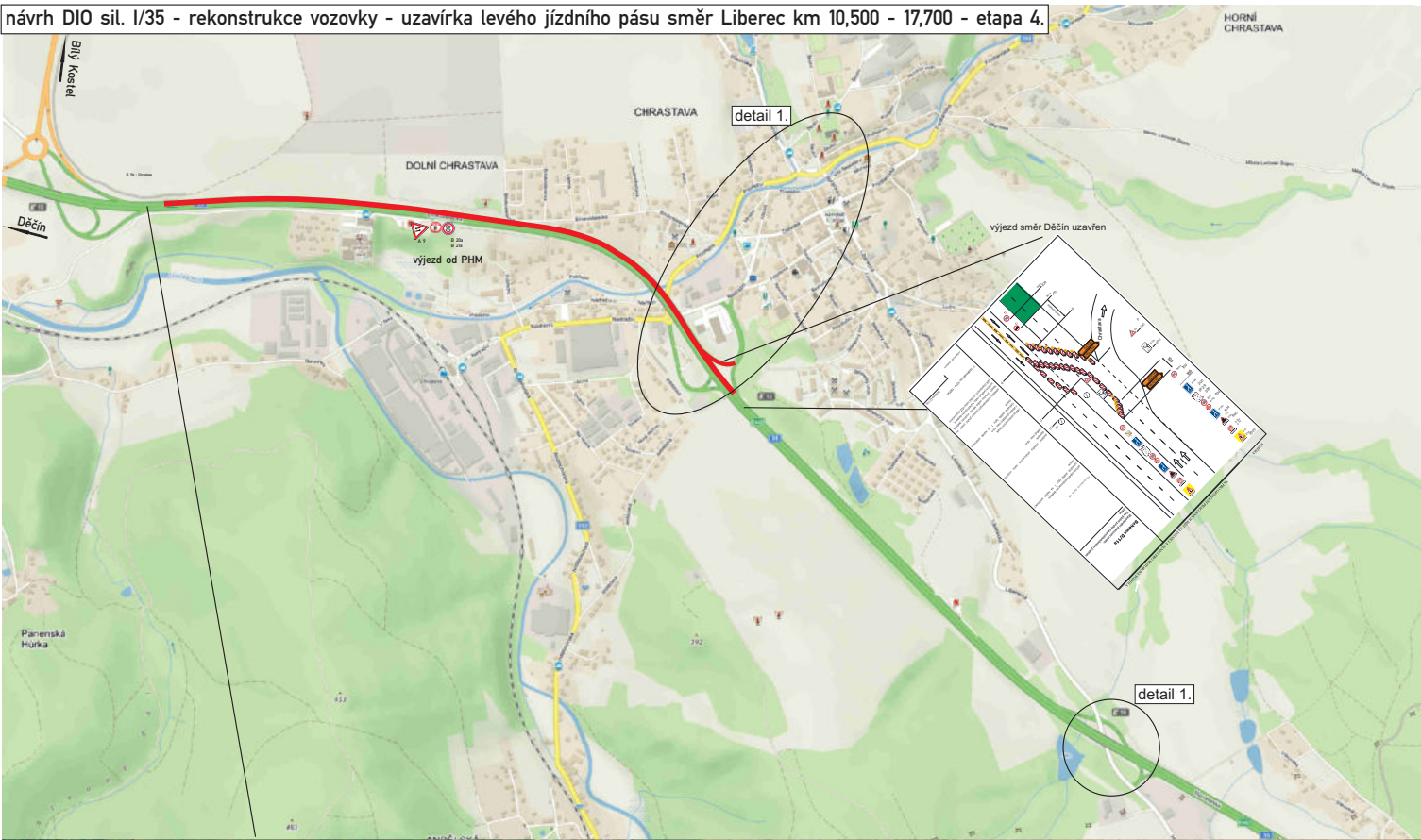
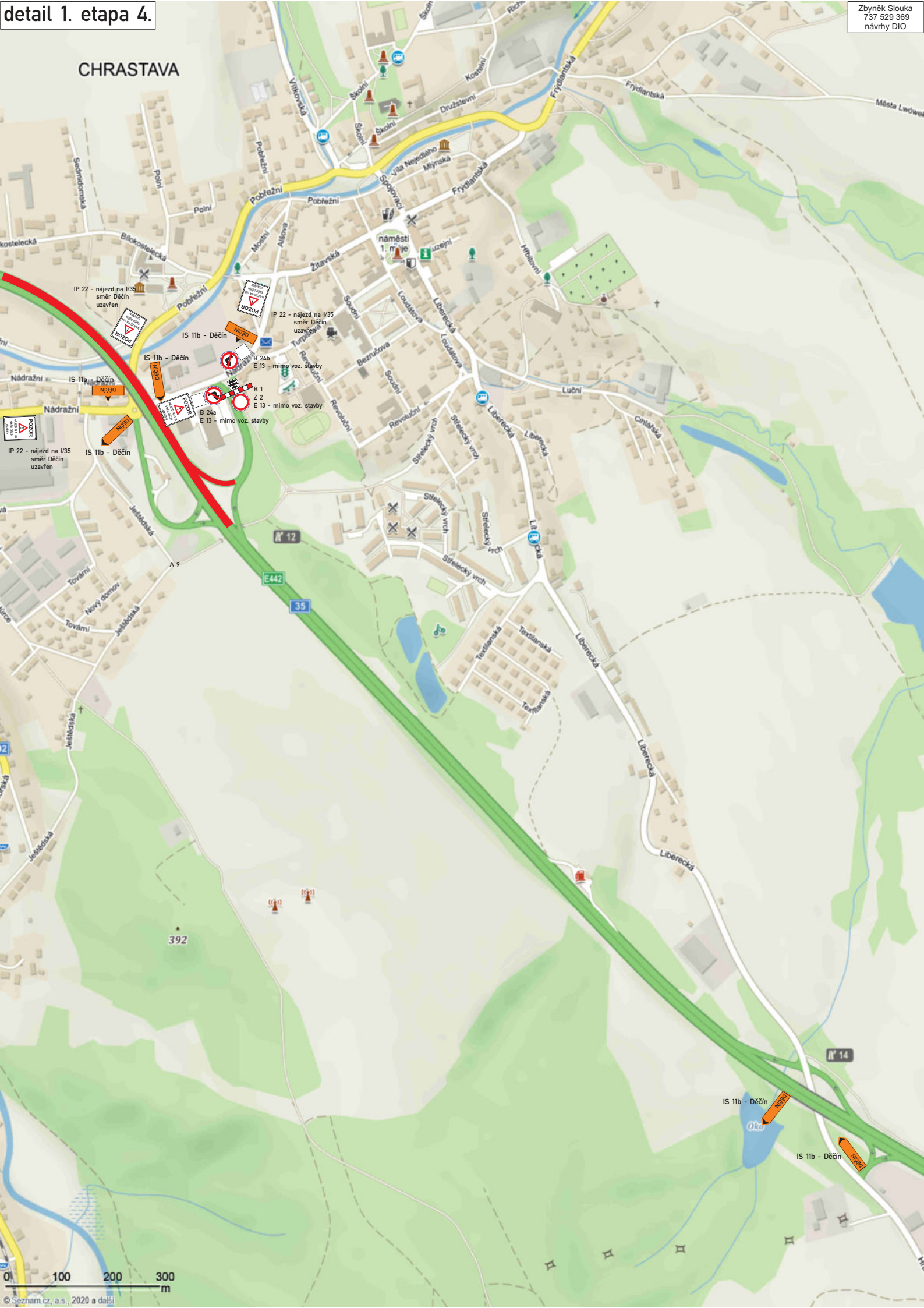


návrh DIO sil. I/35 - rekonstrukce vozovky - uzavírka levého jízdního pásu směr Liberec km 10,500 - 17,700 - etapa 4.

Zbyněk Slouka
737 529 369
návrhy DIO



CHRASTAVA



IP 22 - nájzd na I/35
směr Děčín
uzavřen

IS 11b - Děčín

IS 11b - Děčín

IS 11b - Děčín

IS 11b - Děčín

IS 11b - Děčín

IS 11b - Děčín

IS 11b - Děčín

IS 11b - Děčín

IS 11b - Děčín

IS 11b - Děčín

IS 11b - Děčín

IS 11b - Děčín

IS 11b - Děčín

IS 11b - Děčín

IS 11b - Děčín

IS 11b - Děčín

IS 11b - Děčín

IS 11b - Děčín

IS 11b - Děčín

IS 11b - Děčín

IS 11b - Děčín

IS 11b - Děčín

IS 11b - Děčín

IS 11b - Děčín

IS 11b - Děčín

IS 11b - Děčín