

EUROPAWOCHE – 2006 – EUROPEAN WEEK



**2. ZIRKULAR <> 2<sup>nd</sup> CIRCULAR**

**GI2006**

NACHHALTIGKEIT	<>	SUSTAINABILITY
INTEROPERABILITÄT	<>	INTEROPERABILITY
INFRASTRUKTUREN	<>	INFRASTRUCTURES



NACHHALTIGE ENTWICKLUNG IM EUROPA DER REGIONEN  
 SUSTAINABLE DEVELOPMENT IN EUROPE OF REGIONS

DRESDEN

11. / 12. Mai 2006

RAHMENPROGRAMM

A Crossborder CAGI < NNR > IGN Cooperation

[ [cagi@CAGI.cz](mailto:cagi@CAGI.cz) ] [ [www.CAGI.cz](http://www.CAGI.cz) ] & [ <http://www.NATURNET.org/> ] & [ [www.IGN-SN.de](http://www.IGN-SN.de) ] [ [Vorstand@IGN-SN.de](mailto:Vorstand@IGN-SN.de) ]

© BBR Bonn 2000  
 Copyright © 2006 – CAGI-CZ & NNR-EU & IGN-SN, All rights reserved. 200 km



# GI2006 – SYMPOSIUM - DRESDEN

11./12. MAI 2006

**EU-X-BORDER-GI&SDI IN EUROPE OF REGIONS**  
**NACHHALTIGE ENTWICKLUNG IM EUROPA DER REGIONEN**  
*5<sup>th</sup> SAXONIAN / 5. SÄCHSISCHES GIS-FORUM*



EUROPAWOCHE – 2006 – EUROPEAN WEEK



## 2. ZIRKULAR <> 2<sup>nd</sup> CIRCULAR

# GI 2006 - PROGRAMM

## NACHHALTIGKEIT <> SUSTAINABILITY

VON / OF

GEO - UMWELT / ENVIRO - RAUM / SPATIO  
DATA & INFORMATION & WISSEN / KNOWLEDGE

UND / AND

## INTEROPERABILITÄT <> INTEROPERABILITY

VON / OF

WEB-SERVERS & GEO-CATALOGUES & GEO-WEBSERVICES  
FÜR / FOR

## INFRASTRUKTUREN <> INFRASTRUCTURES

ZUR UNTERSTÜTZUNG VON / FOR SUPPORTING OF

**NACHHALTIGE ENTWICKLUNG IM EUROPA DER REGIONEN**  
**SUSTAINABLE DEVELOPMENT IN EUROPE OF REGIONS**

# DRESDEN

11. / 12. Mai 2006

### ORGANIZERS

A Crossborder CAGI <> IGN Cooperation

#### CAGI (CZ)

CZECH ASSOCIATION OF  
GEOINFORMATION

#### IGN (SN)

INNOVATION.  
Grenzüberschreitendes Netzwerk  
/.Crossborder Network



### EURASIA-L

[ <http://www.kbx7.de/?lid=15016&c=list> ]

### CZ-CBC-SN-L

[ <http://www.kbx7.de/?lid=15074&c=list> ]



### GDI-SN-L

[ <http://www.kbx7.de/?lid=11265&c=list> ]

CAGI - Czech Association for GeoInformation

NATURNET - EU-X-border-GI&SDI - PROJECT

IGN - INNOVATION. Grenzüberschreitendes Netzwerk / Crossborder Network

FÜR EUROREGIONALE BILDUNG UND ENTWICKLUNG e.V.

[ [cagi@CAGI.cz](mailto:cagi@CAGI.cz) ] [ [www.CAGI.cz](http://www.CAGI.cz) ] & [ [www.IGN-SN.de](http://www.IGN-SN.de) ] [ [Vorstand@IGN-SN.de](mailto:Vorstand@IGN-SN.de) ]

Copyright © 2006 – CAGI-CZ & NNR-EU & IGN-SN, All rights reserved.



# GI2006 – SYMPOSIUM - DRESDEN

11./12. MAI 2006

**EU-X-BORDER-GI&SDI IN EUROPE OF REGIONS**  
**NACHHALTIGE ENTWICKLUNG IM EUROPA DER REGIONEN**  
*5<sup>th</sup> SAXONIAN / 5. SÄCHSISCHES GIS-FORUM*



**EUROPAWOCHE - 2006 - EUROPEAN WEEK**

## GI2006 - Symposium

**Euregio-X-Border-GI&SD-Infrastructures for Europe of Regions**

→ 5. Sächsisches GIS-FORUM <> 5<sup>th</sup> Saxonian GIS-FORUM ←

*Mit internationaler Beteiligung <> With international Participation*

**DRESDEN, 11. / 12. Mai 2006**

**CZ-CAGI < X-border-SDI-Cooperation > IGN-SN**

**EU-FP6-Project NATURNET+REDIME (NNR)**

### **Internationales Programmkomitee <> International Program Committee**

Dr. Alessandro **ANNONI** - Head of INSPIRE Technical Coordination Unit, EC/JRC (Brussel/Ispra)  
RNDr. Karel **CHARVAT** - President of European Federation of IT in Agriculture (Prague)  
Prof. Dr. Elmar **CSAPLOVICS** - Head of Remote Sensing Department, Technical University (Dresden)  
B.A.T. Christopher **CORBIN** - Co-Director of I-DRA Ltd., Past-President of AGI-UK, (Brighton)  
Prof. Dr. Jianbang **HE** - Head of State Laboratory of Environmental Information Systems (Beijing)  
RNDr. Jiri **HIESS** - President of Czech Association for GeoInformation (Praha/Jihlava/Vysocina)  
Doz. Dr. Frank **HOFFMANN**, CSc - Chair of GI2006 - President of IGN e.V. Association (Dresden)  
Prof. Dr. Stephan **KELLER** - Chair of MetaInformation Systems, University of Applied Science (Rapperswil)  
Ministerialrat Dr. Reinhold **KOCH** - Head of Spatial Department, Staatsministerium WIVT (München)  
Prof. Dr. Milan **KONECNY** - Head MUNI/GISLAB, President of Intern. Cartographic Association (Brno)  
Prof. Dr. Karel **MAIER** - Chair of Spatial Planning at Technical University/CVUT (Prague)  
Dipl.Phys. Matthias **MÜLLER** - Referent Informationsgesellschaft/Medien, SSK-Verbindungs-Büro (Brüssel)  
B.A. Sven **ROBERTZ** - Programm Manager NRW-X-border-GDI (Köln/Arnhem)  
Prof. Dr. Isolde **ROCH** - Head Regional Planning at Institute of Ecological and Spatial Development (Dresden)  
Prof. Dr. Viktor **RUDSKIJ** - Chair of Nature Protection and Landmanagement, (University Smolensk)  
Dr. Wolfgang **STEINBORN** - GMES- Officer, DG ENTR-Sector-H, Europäische Kommission (Brüssel)  
mr. Frans A.M. van der **STORM** MCM CMC - Program Manager NL-X-border-GDI (Arnhem/Köln)

### **Euro-regionale-X-border-Berater <> Euro-regional-X-border-Advisors**

Dr. Ulrich **BEUTEL**, GIS-Koordinator / Landratsamt (Annaberg)  
Una **BIKE**, Kommunalverband in der Region Riga, / NATURNET-Partner (Krimulda)  
Dr. Blanka **FISCHEROVA**, MRR/CRR - Center for Regional Development (Prague)  
Bernd **KÄSTLER**, SAKD - Sächsische Anstalt Kommunale Datenverarbeitung (Bischofswerda)  
Irena **KOSKOVA**, GIS-Coordinator / Provincial Administration (Liberec)  
Dr. Petr. **KUBICEK**, CAGI - Czech Association for GeoInformation (Brno)  
Dr. Nino **PATERNO**, Regionalmanager of LEADER+ / NATURNET-Partner (Sizilien)  
Dr. Ulrich **WALZ**, IOER - Institute of Ecological and Spatial Planning Research (Dresden)

### **Lokales Organisationskomitee <> Local Organizing Committee**

Dr. Gudrun **HOFFMANN**, BOW - Bildungswerk Ost-West (Dresden)  
Prof. Dr. Siegmund **KLOSS**, IGN - Innovation. Grenzüberschreitendes Netzwerk e.V. (Dresden)  
Dr. Klaus-Dieter **MICHAEL**, VSBI - Verband Sächsischer Bildungs-Institutionen (Dresden)  
Sabine **WITSCHAS**, IOER - Institute of Ecological and Spatial Planning Research (Dresden)  
Gunter **PAUL**, TUD/MDC - MediaDesignCenter, Technische Universität (Dresden)

**Pre-Symposium < Euregio-X-border-GI&SDI > Workshop**

**GeoINSPIRE'd Bohemia<>Saxonia-EuroRegions ( GIBSER )**

## TEILNEHMER < [Service](#) > PARTICIPANTS

! Ein Service der Ingenieur-Geometer-Schweiz <> A service of Engineer-Geometers-Switzerland !

[ [GI2006-ANFRAGEN-ONLINE<via IGS>QUESTIONS-ONLINE](#) ]  
[ [GI2006-ANMELDEN-ONLINE<via IGS>REGISTRATION-ONLINE](#) ]

## ANMELDUNG < [Information](#) > REGISTRATION

Teilnehmer < [Gebühr<>Fee](#) > Participants \*)

[ [GI2006\\_Registration\\_NAME.doc](#) ]

\*) see info for early registration rebate conditions until 02.05..2006 /  
siehe Sonderkonditionen bei frühzeitiger Anmeldung bis 02.05.2006

Registration\_Form to be sent as EMAIL to

[ [Mailto:IGN-Vorstand@GMX.de?Subject=GI2006\\_Registration\\_NAME](mailto:IGN-Vorstand@GMX.de?Subject=GI2006_Registration_NAME) ]

## ÜBERNACHTUNG < [Service](#) > ACCOMODATION

HOTEL INFO FOR DRESDEN TOURISTS

[ <http://www.dresden.de/index.html?node=13908> ]

HOTEL SUCHEN NÄHE HAUPTBAHNHOF <> HOTEL SEARCH NEARBY MAIN STATION

[ <http://www.hotel.de/> ]

IGN's SPECIAL TIP FOR HOTELPENSION

( CODE: GI2006-Symposium )

[ ["Gasthof Bannewitz" | Winkelmannstrasse 1 | D - 01728 Bannewitz](#) ]

Telefon: +49-351-4015505 | Fax: +49-351-4015537

[ [info@gasthof-bannewitz.de](mailto:info@gasthof-bannewitz.de) ]

## ORIENTIERUNG < [Information](#) > NAVIGATION

DRESDEN INTERACTIVE CITY MAP

[ <http://themenstadtplan.idu.de/simple> ]

36th INTERNATIONAL "DIXIELAND" JAZZ FESTIVAL

[ <http://www.DIXIELAND.de> ]

**EINLADUNG AN EURO-REGIONEN <> INVITATION TO EUROREGIONS**

*The term "Euroregion" does not always clearly show the differences in aims and objectives, if they exist at all, compared with other transfrontier structures which are given different names. Moreover, the legal frameworks within which the "Euroregions" operate exhibit such a wide variety of forms that it is difficult to clearly associate one particular legal framework with the term "Euroregion" [ESPON].*

**[Lernende Regionen](#) < [EUREGIO-WIKIPEDIA-LIST](#) > [EuroRegions-Vision2020](#)**

[EuroRegionBodensee](#) (AT<>DE<>CH)  
[RegioTriRhena / Südlicher Oberrhein](#) (CH<>DE<>FR)  
[EuroRegion PAMINA Mittlerer Oberrhein](#) (DE<>FR)  
[EuroRegion Grande](#) (DE<>FR<>LU<>BE)  
[Euregio Maas-Rhein/Euregio Maas-use-Rhin](#) (DE<>BE<>NL)  
[EuroRegion-Rhein-Waal](#) (DE<>NL)  
[Region Münsterland](#) << [X-border-GDI](#) >> [Gelderland u.a.](#) (NRW<>NL)  
[Metropol-Region-Hamburg](#) (HH<>SH)  
[EuroRegion Sønderjylland / Schleswig](#) (DK<>SH)  
[EuroRegion Baltic](#) (DK<>LV<>LT)  
[Euroregion Pomerania](#) (DE<>PL)  
[EuroRegion ProEuropa / Viadrina](#) (DE<>PL)  
[Euroregion Sprewa / Nysa / Bobr](#) (DE<>PL)  
[EuroRegion Tatry](#) (DE<>PL)  
[EuroRegion Nisa / Neisse / Nysa](#) (CZ<>DE<>PL)  
[EuroRegion Elbe / Labe](#) (CZ<>DE)  
[EuroRegion Krusnohori / Erzgebirge](#) (CZ<>DE)  
[EuroRegion Egrensis](#) (CZ<>DE-BY-SN)  
[EuRegio Austria/Bohemia / Bavaria / Sumava](#) (AT<>CZ<>DE)  
[EuRegio Salzburg/Traunstein](#) (AT<>DE)  
[EuRegio-ViaSalina](#) (AT<>DE)  
[EU-Zukunfts-Region](#) (AT<>HR<>HU<>SK<>SI)  
[EuroRegion Danube-Kris-Mures-Tisa](#) (HU-RO-SM)

**FURTHER WEB INFORMATION**

<http://maps.kraj-lbc.cz/dokumenty/GI2006/GI-2006-CALL-FOR-PAPERS.pdf>  
<http://www.giswiki.de/index.php/Veranstaltungen#Mai>  
<http://www.GDI-SN.de>  
<http://www.NATURNET.org>  
<http://www.cagi.cz/novinka.php?id=178>  
<http://www.cagi.cz/novinka.php?id=179>  
<http://www.cagi.cz/akcevyepis.php?id=341>  
<http://www.CAGI.cz> & <http://www.IGN-SN.de>

**PRE-INFORMATION by CAGI-CZ & EFITA**

Workshop on LEADER<sup>+</sup> < 14.05.2006 > Jihlava (Region VYSOCINA)  
Workshops of EFITA on rural@work < 15.05.2006 > Praha (Agri-University & CCSS)  
*[agri-food@rural](#) | [broadband@rural](#) | [eContent@rural](#) | [eLearning@rural](#)*

[ ISAF 2006 < 16.5.-17.5.2006 > PRAHA (CZ) ]  
XII. International Conference on Information Systems for Agriculture and Forestry  
[ [http://www.iszl.cz/index\\_en.htm](http://www.iszl.cz/index_en.htm) ]

**Eröffnung der EUROPAWOCHE < 05.05.2006 > Opening of the EUROPEAN WEEK**

**"Dresden - Provinzhauptstadt oder europäische Metropole? Wie sehen wir unsere Rolle in der Zukunft?"**

Zukunftswerkstatt der Landeshauptstadt Dresden <> The Future Event of Metropolitan Dresden

Referat für europäische und internationale Angelegenheiten

Dresden - Rathaus, Festsaal - 18.30 Uhr / Dresden - City Events Hall,

**CZ-CAGI-GIS < GI-POSTER-EXHIBITION > GIS-CAGI-CZ**

Dresden - Rathaus, Foyer "Goldene Pforte" Dr.-Külz-Ring 19, - 18:00 Uhr - City Hall Foyer "Golden Gate"

Exhibition-Video-Preview for Authors and Participants only [ <http://service.gmx.net/mc/4FE80klK23cBmwwRpH6mhpFLpGFtEZ> ] 42MB !

**Europawoche 2006 - ZUSE-Innovations-FORUM**

[ Gefördert durch den Freistaat Sachsen - Regierungspräsidium Dresden - RPDD # 26-6220.12 / 06-03 ]

**Thema:** EU Normen und Interoperability-Standards in der BAU- und GEO-Informationswirtschaft

Terminverlegung aus organisatorischen Gründen vom 8. Mai auf den 10. Mai 2006 / 17:00 Uhr !

Konrad-ZUSE-Haus, Liebigstr. 3, 01069 DRESDEN

Weitere Informationen: TEL: [ +49-351-403.2729 ] & EMAIL: [ [info@GDI-SN.de](mailto:info@GDI-SN.de) ]

[ **Siehe auch:** Europawoche 2006 - Veranstaltungsprogramm der Sächsischen Staatskanzlei, S.12/14 ]

**Europawoche 2006 - GI2006-Symposium-PROGRAMM**

**ERÖFFNUNG < 11.05.2006 > OPENING**

**1. Tag: Sustainability of GI Europe of Regions < 09:45-18:00 > 1<sup>st</sup> Day: Nachhaltigkeit GI im Europa der Regionen**

KEYNOTES BY SAXONIAN SMWA & STAKEHOLDERS FROM DRESDEN REGION

The Status of GEO-ENVIRO-SPATIO Information for Touristic, Regional and Crossborder Planning

The First GeoINSPIRE'd Bohemia<>Saxonia Euregio-X-border-GI&SDI Workshop & Lessons learnt and other themes



Image © by BBR

**GI2006 - eGOV & GeoWebGIS**

Sustainability of GeoInfo and  
 Interoperability of Infrastructures for SustDev  
 in Central-European Crossborder  
 EUREGIOS

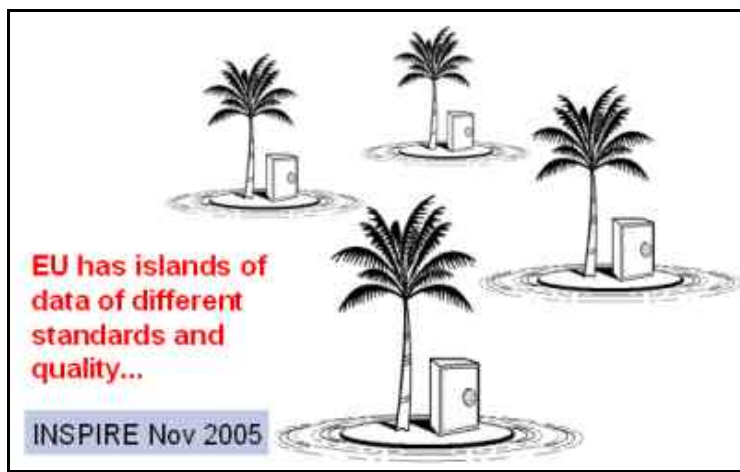


Image © by ECJRC

**GI2006-EU-Symposium**

"EU-Regional-X-border-GI&SDI in Europe of Regions"  
 The Challenges for Europe of Regions  
 The 5th Saxonian GIS-FORUM-2006, DRESDEN 11./12.05.2006

**2. Tag: Interoperability & X-border-RegioSDI < 08:30 - 15:00 > 2nd Day: Interoperabilität & X-border-RegioGDI**

KEYNOTES BY EGIP, INSPIRE AND NATURNET STAKEHOLDERS

The European INTERREG-X-border-Projects *ISAMAP*, *HarmonISA*, *CENTROPE*, *Cross-SIS*

The EC-FP6-Project NATURNET+REDIME (2005-2007) *EU-X-border-GI&SDI-Portal-NNR*

The Round GI Strategy Table "ESDI, INSPIRE & RegioGIS CHALLENGES FOR THE EUROPE OF REGIONS"

The EU-Programs eCONTENTplus, LEADERplus, INTERREG and X-border-Cooperation > 2007

The Opportunities of EU-FP7 Program 2007-2013

## 2. ZIRKULAR - RAHMENPROGRAMM

10.05.	ZEIT	11.05.2006	ZEIT	12.05.2006	13.05.
		DRESDEN, Rathaus, Dr.-Külz-Ring 19/ Main Entry / Conference Room #3-13		DRESDEN, Rathaus, Dr.-Külz-Ring 19/ Main Entry / Conference Room #3-13	
	08:30	REGISTRATION REGISTRATION REGISTRATION	08:30	<b>CAGI-CZ-POSTER EXHIBITION</b> <b>CAGI-CZ-POSTER EXHIBITION</b>	36 <sup>th</sup> O p e n  A i r  D I X I E L A N D  J A Z Z   F E S T I V A L
	09:00		09:00	REGISTRATION	
			09:15	<b>DITETOVA; POSTOLKA / TUL (CZ)</b>	
		09:30	<b>MAYER / ProGIS AG, Villach (AT)</b> • INTEGRATION & SUSTAINABILITY		
	09:45	<b>TIMM / EU Dept. City Dresden (DE)</b>			
	10:00	<b>WUNDERLICH / SMWA Dresden (DE)</b> • REVISION EU-Verkehrs-KORRIDORE	10:00	<b>CORBIN / I-DRA Brighton (UK)</b> • PSI, INSPIRE & ESDI CHALLENGES	
	10:30	<b>FISCHEROVA / MinRR, CRR Praha</b> • EU & CZ STRUCTURE FONDS	10:30	<b>CHARVAT / CCSS Praha (CZ)</b> • NATURNET+REDIME Project	
	11:00	<b>WITSCHAS/IOER; GRUNER/TUD (DE)</b>	11:00	<b>POSTOLKA; et al / TU Liberec (CZ)</b>	
	11:15	? Q&A / Discussion	11:15	? Q&A / Discussion	
	11:30	LunchBreak / Mittagspause	11:30	LunchBreak / Mittagspause	
		LunchBreak / Mittagspause		LunchBreak / Mittagspause	
		LunchBreak / Mittagspause		LunchBreak / Mittagspause	
		LunchBreak / Mittagspause		LunchBreak / Mittagspause	
	12:30	<b>BLACHOWSKI / WBU Wroclaw (PL)</b> • Regional Planning Wroclaw	12:30	<b>SCHRENK / MultiMediaPlan, Wien (AT)</b> • CENTROPE & Cross-SIS Projekte	
	13:00	<b>BÖHM / HG-GDS GmbH Jena (DE)</b>	13:00	<b>GRUBER,MANDL / UniKlagenfurt (AT)</b> • ISAMAP & HarmonISA Projekte	
	13:15	<b>MACOUN / Gekon s.r.o Praha (CZ)</b>			
	13:30	<b>HIESS / CZ Regional Planning, Jihlava (CZ)</b>	13:30	<b>ROUND TABLE „RegioSDI“</b> • GINIE & INSPIRE & REGIONS • EGIP-ESDI-NSDI-RegioSDI • X-border-GeoPortal NNR • eC+ & FP7 [2007-2013]	
		? Q&A / Discussion		• CrossBorderCooperation > 2007	
	14:00	<b>SLIWINSKI / ConTerra Warszawa (PL)</b> • DEMO:«sdi.suite»TOURISTIC Usecase			
	14:30	• SKYPE: HUANG / UniBuffalo (CN/US)			
	14:45	• DEMO: NNR /X-border-SDI-GeoPortal			
	15:00	CoffeeBreak / Kaffeepause	15:00	? Q&A / Discussion	
		CoffeeBreak / Kaffeepause	15:15	<b>CAGI &gt;CONCLUSIONS&lt; IGN</b>	
	15:30	<b>CAGI-POSTER &amp; DEMO-SESSION</b> <b>CAGI-POSTER &amp; DEMO-SESSION</b>	15:30	= END =	
	16:00	<b>HIESS / GIS-Coordinator, Jihlava (CZ)</b> • CAGI & REGIOGIS VYSOCINA	16:00	SOCIAL PROGRAM EVENTS Frauenkirche <> The Lady Church	
	16:30	<b>JANECKA / Geomatics UniPlzen (CZ)</b>	16:30	Grünes Gewölbe <> The Green Vault	
Zuse-Haus	17:00	• VISUALIZATION & SECURITY	17:00	Zwinger	
Liebigstr.3	17:15	<b>HIESS /CAGI Praha (CZ); NNR USECASES &amp;</b>	17:30	Semper Opera	
<b>ZIF</b>	17:30	<b>HOFFMANN /IGN(DE); GIBSER LESSONS</b>			
EU	17:45	? Q&A / Discussion			
Standards	18:00	- END -	18:00	Dixieland-Festival (JazzNight @ Palast)	
		SOCIAL PROGRAM EVENTS			
GI2006	18:30		18:30		
Programm		Dixieland-Festival (Jazz @ Altmarkt)			
	19:00		19:00		
		Dixieland-Festival (Jazz @ ELBE)			
Welcome	19:30		19:30		
together		Dixieland-Festival (Jazz @ TU Campus)			
	20:00		20:00		
	t.b.a.	“From Dixie-Campus to DD-View by Night”			



Činnost asociace se řídí Programem CAGI, který je schvalován valnou hromadou a v němž jsou vymezeny hlavní směry dalšího působení, přičemž aktivita členů může výrazně přispět k rozšíření témat, kterými se asociace prostřednictvím svých organizačních článků (viz stanovy) zabývá. Činnost CAGI se soustřeďuje převážně na práci v odborných skupinách a odborných komisích. Více informací o jejich činnosti lze nalézt v sekci [ [Aktivity CAGI](#) ].

The activity of Czech Association for GeoInformation is based on the Programm of CAGI, which is agreed with by its general member meeting. The programm is defining the main directions of its members work. The members can extend the goals of CAGI following its statutes and bylaws. CAGI's activity is generally organized in expert working groups and further in expert commissions. For more information look at website [ [Activity of CAGI](#) ].

Česká asociace pro geoinformace  
kancelář 229B Novotného lávka 5, 116 68 Praha 1  
tel./fax: 221 082 374  
E-mail: [cagi@cagi.cz](mailto:cagi@cagi.cz) IČ: 65999371

## **INNOVATION. Grenzüberschreitendes Netzwerk** für euro-regionale Bildung und Entwicklung e.V. - INNOVATION. Crossborder Network -

"INNOVATION.Grenzüberschreitendes NETZWERK e.V. / IGN e.V." has been founded at September 2nd, 2003 in Dresden (Germany) as a charity Association (*gemeinnütziger Verein*) by Czechia and Saxonia experts of Cybernetics, Geomatics, Cyberlaw, Economics, Mediamatics, Process&Project Management and Spatial Sciences for GEO - ENVIRO - SPATIO - Applications.

IGN is enabling a true multinational membership, especially across borders of Euro-Regions of Czechia, Polonia and Saxonia. IGN is offering and supporting data, information, knowledge and expertise services combined with management and know-how transfer openly and transparently to the public, but also promoting awareness on INNOVATION's in fields of postgradual education, training, as well as providing research, sustainable development and technology consultancy from local up to EU level.

Therefore, IGN is about networking citizens, public administrations and private industries (especially SME's) interactively together in actual FP6 & future FP7 projects in the enlarged EUROPE of REGIONS, and it is supporting a globalized, euro-regional, transnational and / or cross-border networked, EAST-WEST and NORTH-SOUTH collaboration and interoperation

[ Last updated: 24.02.2006 by [IGN](#) ]

Copyright © by IGN e.V. 2003-2006. All rights reserved // Alle Rechte vorbehalten.





**GI2006 – SYMPOSIUM - DRESDEN**  
**11./12. MAI 2006**  
**EU-X-BORDER-GI&SDI IN EUROPE OF REGIONS**  
**NACHHALTIGE ENTWICKLUNG IM EUROPA DER REGIONEN**  
**5<sup>th</sup> SAXONIAN / 5. SÄCHSISCHES GIS-FORUM**



**ANMELDUNG < GI2006 > REGISTRATION**

**GI2006 - Kulturelles Begleitprogramm <> Social Event Program - GI2006**

- [ 10.-14.5.2006 ]                    **GI2006 & JazzGIS - 36th International DIXIELAND Jazz Festival**  
*Please mark your interests and tell us your preferences for visiting!*
- [ **10. Mai 2006** ]   [ ]            17:00 ZUSE-Innovation-Forum <> 19:00 GI2006-Welcome together
- [ **11. Mai 2006** ]   [ ]            18:00 Visiting the Ambiente of (new) re-built "Lady Church" \*t.b.c.
- [ ]            19:30 DIXIELAND River-Boat Shuffle at *Elbe/Labe* Steamboats
- [ ]            19:30 DIXIELAND Jazz on the TU Dresden Campus
- [ **12. Mai 2006** ]   [ ]            18:00 DIXIELAND Brass-Band-Parade
- [ ]            19:30 DIXIELAND Jazz Night ... etc.
- [ **13. Mai 2006** ]   [ ]            10:30 The 36th International DIXIELAND-OpenAir-JAZZ-MILE  
 Dresden Jazz-Mile with 36 Jazz-Bands on 6 Open Platforms in City Center  
**More Info:** [ <http://www.DIXIELAND-DRESDEN.de> ]
  
- [ **14. Mai 2006** ]   [ ]            NNR-Projekt-EXKURSION [ [Nationalpark "Sächsische Schweiz"](#) ]  
 ( *A special event for our NNR partners, as well participants from other Euregios and abroad* )

**TEILNEHMER < REGISTRATION > PARTICIPANTS !**

TITLE / NAME: \_\_\_\_\_  
 ORG / UNIT: \_\_\_\_\_  
 ADRESSE: \_\_\_\_\_  
 Your Email: \_\_\_\_\_ TEL: \_\_\_\_\_  
 Rechnungsadresse: \_\_\_\_\_  
 \_\_\_\_\_ KAT/GEB\*): \_\_\_\_.

**SEND MAIL >> [IGN-Vorstand@GMX.de?Subject=GI2006\\_Registration\\_NAME](mailto:IGN-Vorstand@GMX.de?Subject=GI2006_Registration_NAME)**

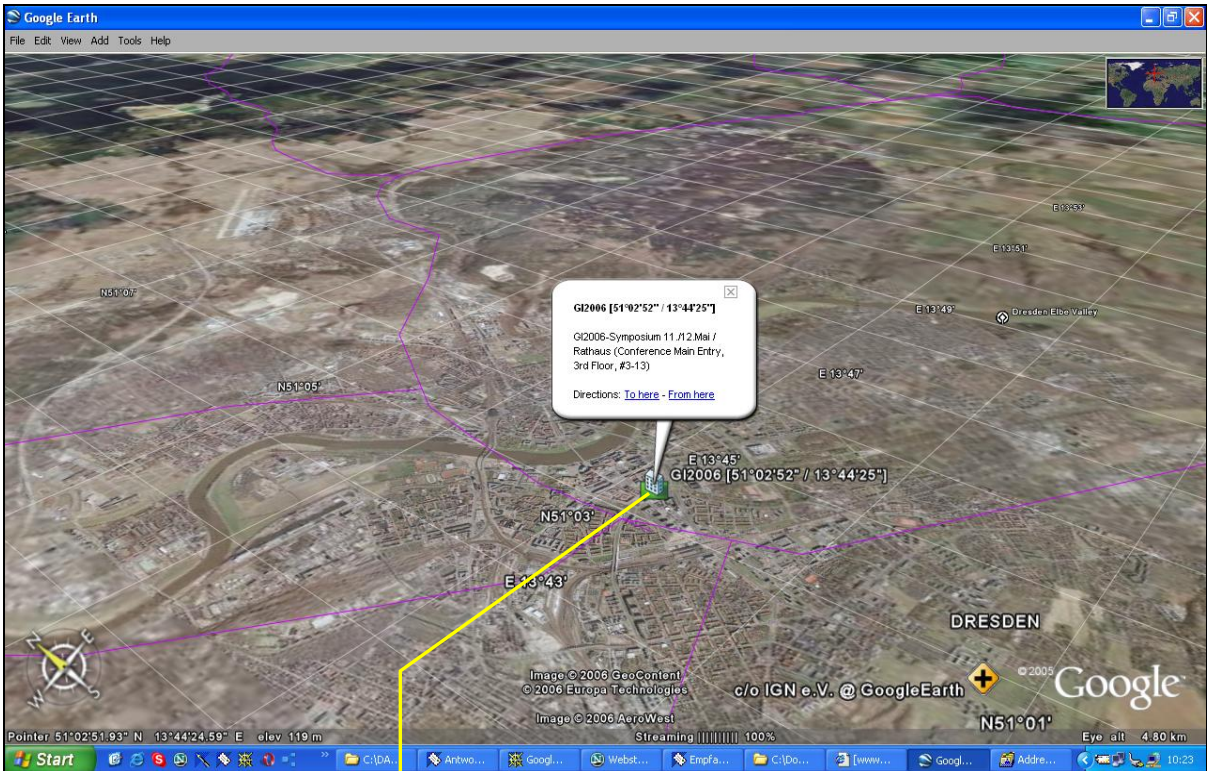
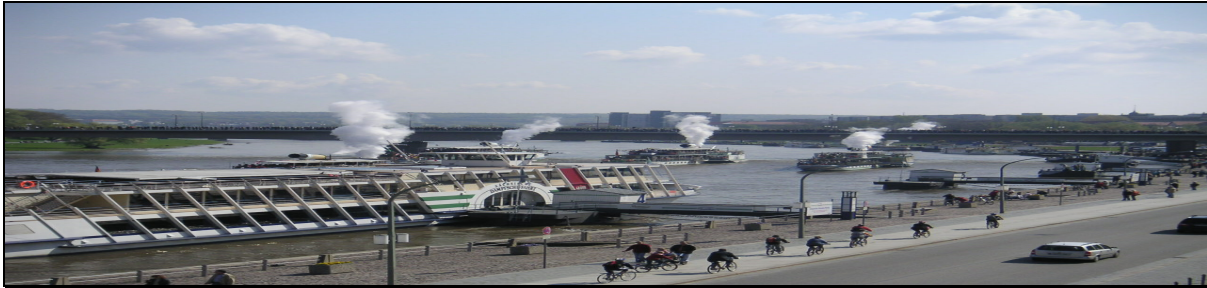
**Teilnahmegebühr in EUR < CODE: GI2006\_NAME > Participation fee in EUR: \*)**  
 \*) Aktive Referenten erhalten 50% vergünstigte Teilnahmebedingungen.  
*Active Speakers/Demonstrators will receive 50% rebate for participating Conditions.*  
**Banküberweisung (Frühbucher bis 2. Mai) <> Bank transfer (in advance until May 2<sup>nd</sup>, 2006).**  
**IGN e.V. Adresse:** c/o IGN-Vorstand, M.-A.Nexoe-Str. 4, D-01217 DRESDEN  
**IGN e.V. Konto:** Ostsächsische Sparkasse DRESDEN, Güntzplatz 5  
**IBAN:** DE44 8505 0300 3120 0440 82 <> **BIC:** OSDDDE 81XXX

Kategorie / Gebühr *)	1. Westeuropa/EU15 bis 02.05.2006	2. EU15 nach 02.05.2006	3. Osteuropa/CEEC until 02.05.2006	4. CEEC after 02.05.2006
(A) Firmenwerbung **)	200,-	240,-	100,-	120,-
(B) Teilnehmer	60,-	80,-	40,-	60,-
(C) Referenten*)	30,-	40,-	20,-	30,-
(D) Studenten	10,-	20,-	5,-	10,-

Die Tagungsgebühr beinhaltet Tagungsunterlagen, Erfrischungsgetränke und Tagungsservice und ist per Banktransfer im Voraus zu bezahlen. Sie erhalten eine Rechnung / Quittung, die nach dem 5.Mai verbindlich zu begleichen ist.  
*The Symposium Fee contains Proceedings, Refreshments and Conference services to be paid in advance. You get a bill / receipt confirmation to be due after May 5<sup>th</sup>, 2006.*

\*\*) Interessierte Firmen können ihre aktuellen GDI-Produktsuites vorstellen.  
 Anfragen senden an: [ [Vorstand@IGN-SN.de](mailto:Vorstand@IGN-SN.de) ].

\*\*) Interested Firms may demonstrate their latest SDL.suites products.  
 Please, send info requests: [ [Vorstand@IGN-SN.de](mailto:Vorstand@IGN-SN.de) ].



Dresden, Rathaus / City Hall, Haupt-Eingang / Main Entry, Dr. Külz-Ring 19, 3<sup>rd</sup> Floor, Conference Room # 3-13

